

MANUFACTURED BY:

ROBERTS
ENGINEERING



EQUIPMENT

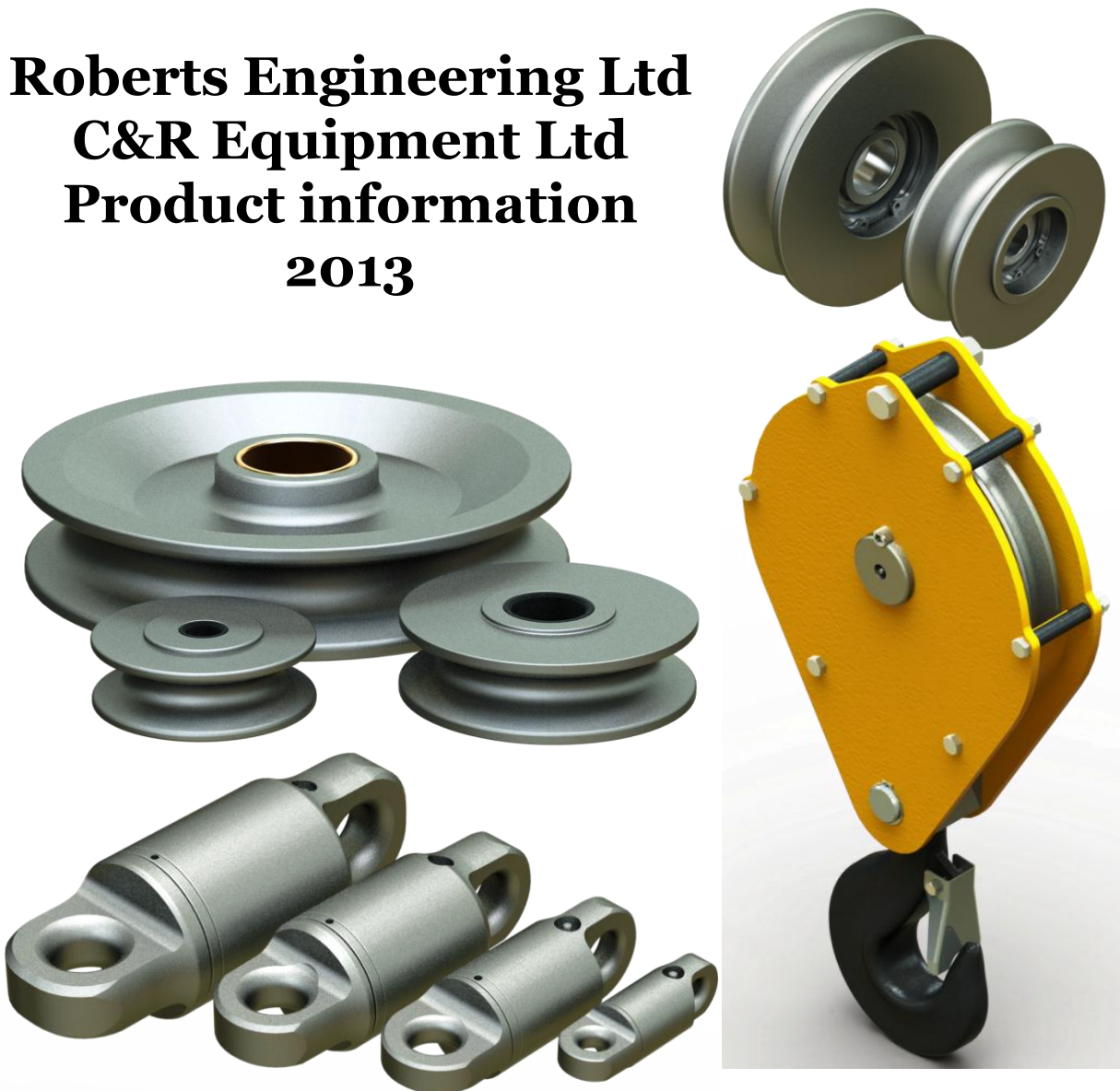
PRECISION CNC MACHINING SPECIALISTS

PH: 03 384 4360

www.robertseng.co.nz

www.crequipment.co.nz

Roberts Engineering Ltd C&R Equipment Ltd Product information 2013

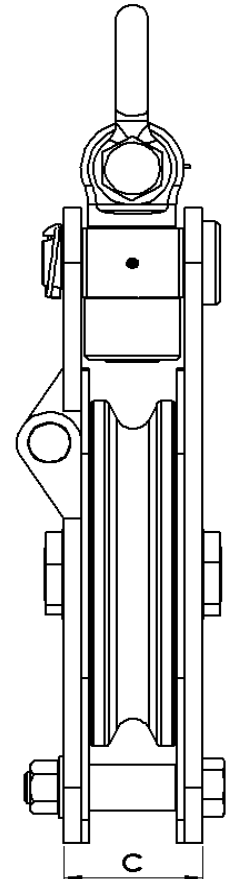
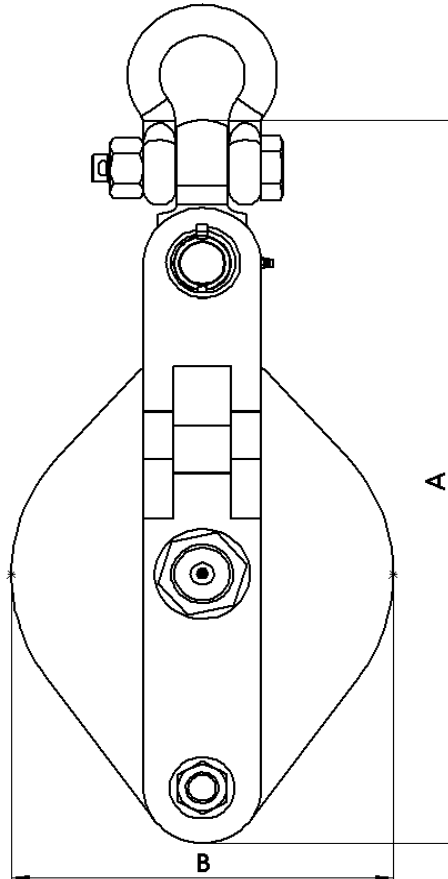


leenz
inc.
Lifting Equipment Engineers New Zealand

Manufactured in accordance with:

B.S. 4018: 1966

A.S. B298-1871



Special Features:

- Tested and Certified with easy to read W.L.L plate
- Quick action single snatch facilitates ease of rope reeving with positive location and locking
- Swivelling crosshead
- Fitted with high load green pin shackle
- Fully machined sheave with greaseable bronze bearing hub
- Wide shoulder sheave profile ensures maximum rope guiding and added sheave protection
- Stepped axle is fully locked for block rigidity
- Becket for third fall of rope
- D.L.L Australia (Vict.) approved
- Can be supplied in a crosshead - hook configuration, available on request
- Available in 1, 2 or 3 sheave configurations
- Powdercoated side plates with zinc plated hardware for maximum corrosion resistance

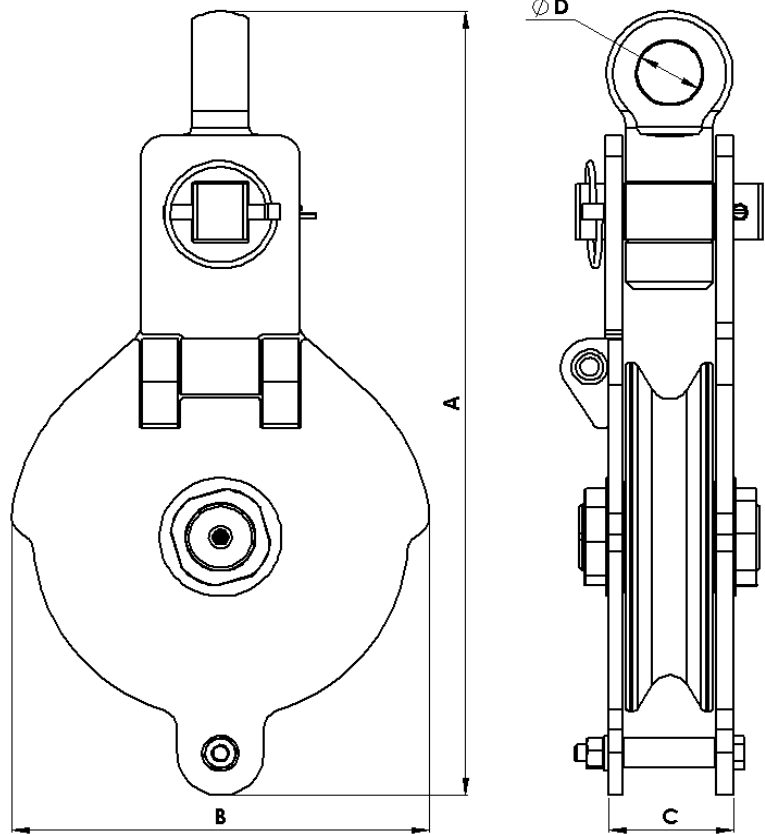
BLOCK SIZE	W.L.L FIXED tonne	W.L.L MOVING tonne	PROOF LOAD tonne	SHEAVE Ø mm	WIRE ROPE Ø mm	A mm	B mm	C mm	WEIGHT kg
150mm	1	2	4	150	12	337	160	59	7
200mm	2	4	8	200	16	429	212	79	17
250mm	3	6	12	250	20	524	260	94	39

PRODUCT CODES	
150mm	7-145-150
200mm	7-145-200
250mm	7-145-250

Manufactured in accordance with:

B.S. 4018: 1966

A.S. B298-1871



Special Features:

- Tested and Certified with easy to read W.L.L plate
- Quick action single snatch facilitates ease of rope reeving with positive location and locking
- Swivelling crosshead
- Fitted with high load green pin shackle (optional)
- Fully machined sheave with greaseable bronze bearing hub
- Wide shoulder sheave profile ensures maximum rope guiding and added sheave protection
- Stepped axle is fully locked for block rigidity
- Becket for third fall of rope
- D.L.L Australia (Vict.) approved
- Available in 1 or 2 sheave configurations
- Powdercoated side plates with zinc plated hardware for maximum corrosion resistance

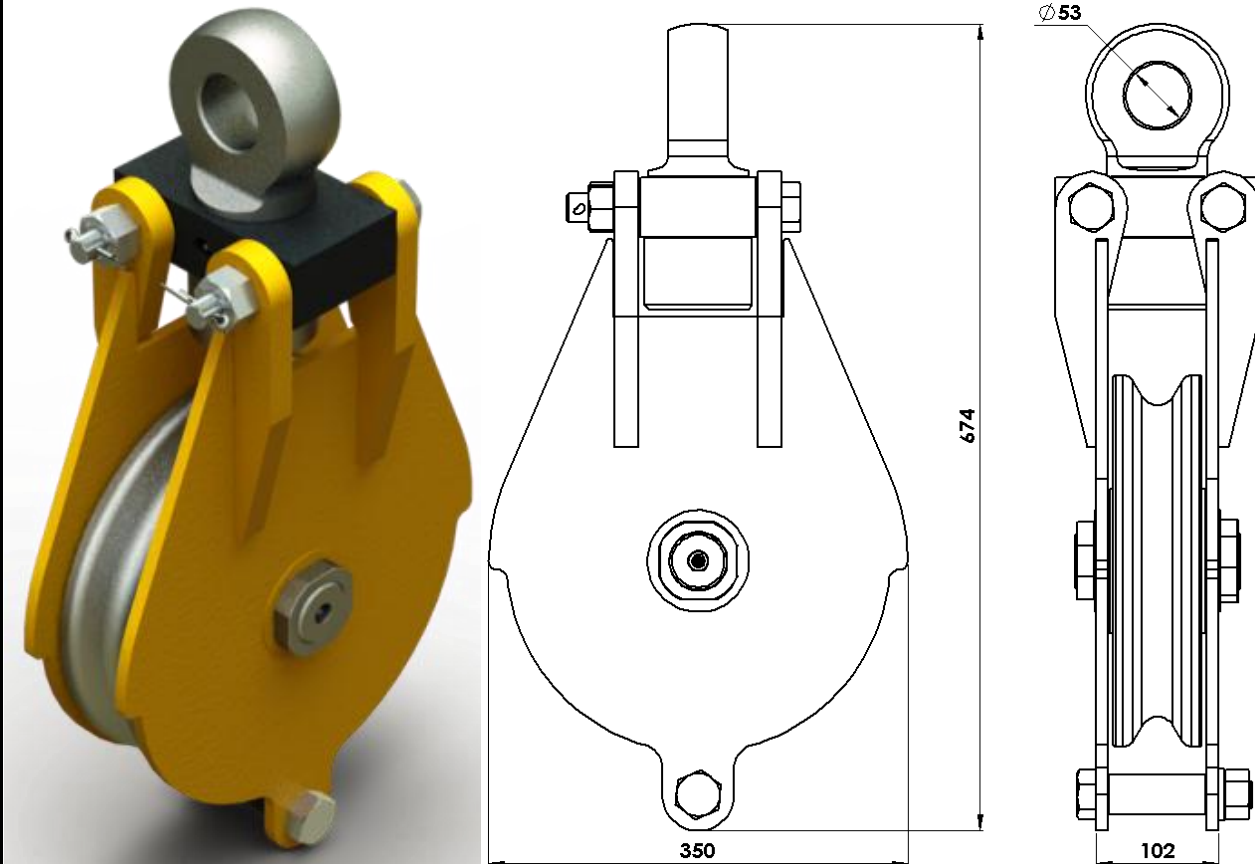
BLOCK SIZE	W.L.L FIXED tonne	W.L.L MOVING tonne	PROOF LOAD tonne	SHEAVE Ø mm	WIRE ROPE Ø mm	A mm	B mm	C mm	D Ø mm	WEIGHT kg
150mm	5	10	20	150	20	462	195	87	45	20
200mm	6	12	24	200	22	513	248	87	45	26
250mm	7.5	15	30	250	26	562	290	87	45	33

PRODUCT CODES	
150mm	7-155-150
200mm	7-155-200
250mm	7-155-250

Manufactured in accordance with:

B.S. 4018: 1966

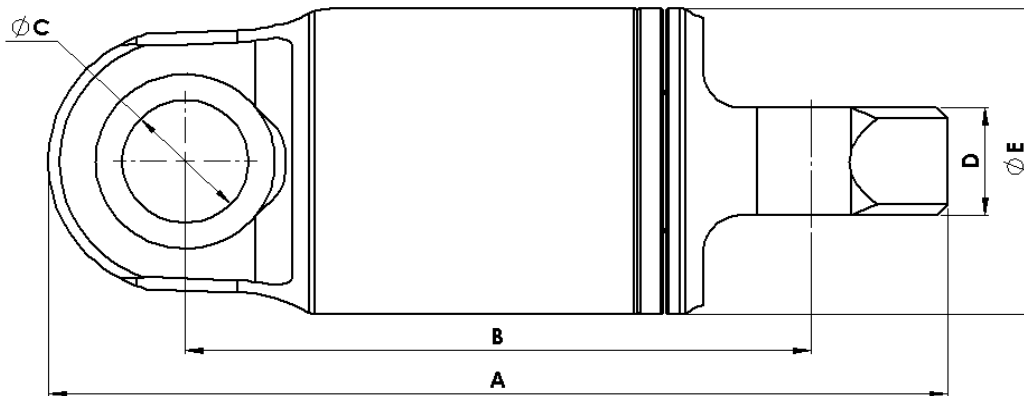
A.S. B298-1871



Special Features:

- Tested and Certified with easy to read W.L.L plate
- Quick action double snatch facilitates ease of rope reeving with positive location and locking
- Swivelling crosshead
- Fitted with high load green pin shackle (optional)
- Fully machined sheave with greaseable bronze bearing hub
- Wide shoulder sheave profile ensures maximum rope guiding and added sheave protection
- Stepped axle is fully locked for block rigidity
- Becket for third fall of rope
- D.L.L Australia (Vict.) approved
- Available in 1 or 2 sheave configurations
- Powdercoated side plates with zinc plated hardware for maximum corrosion resistance

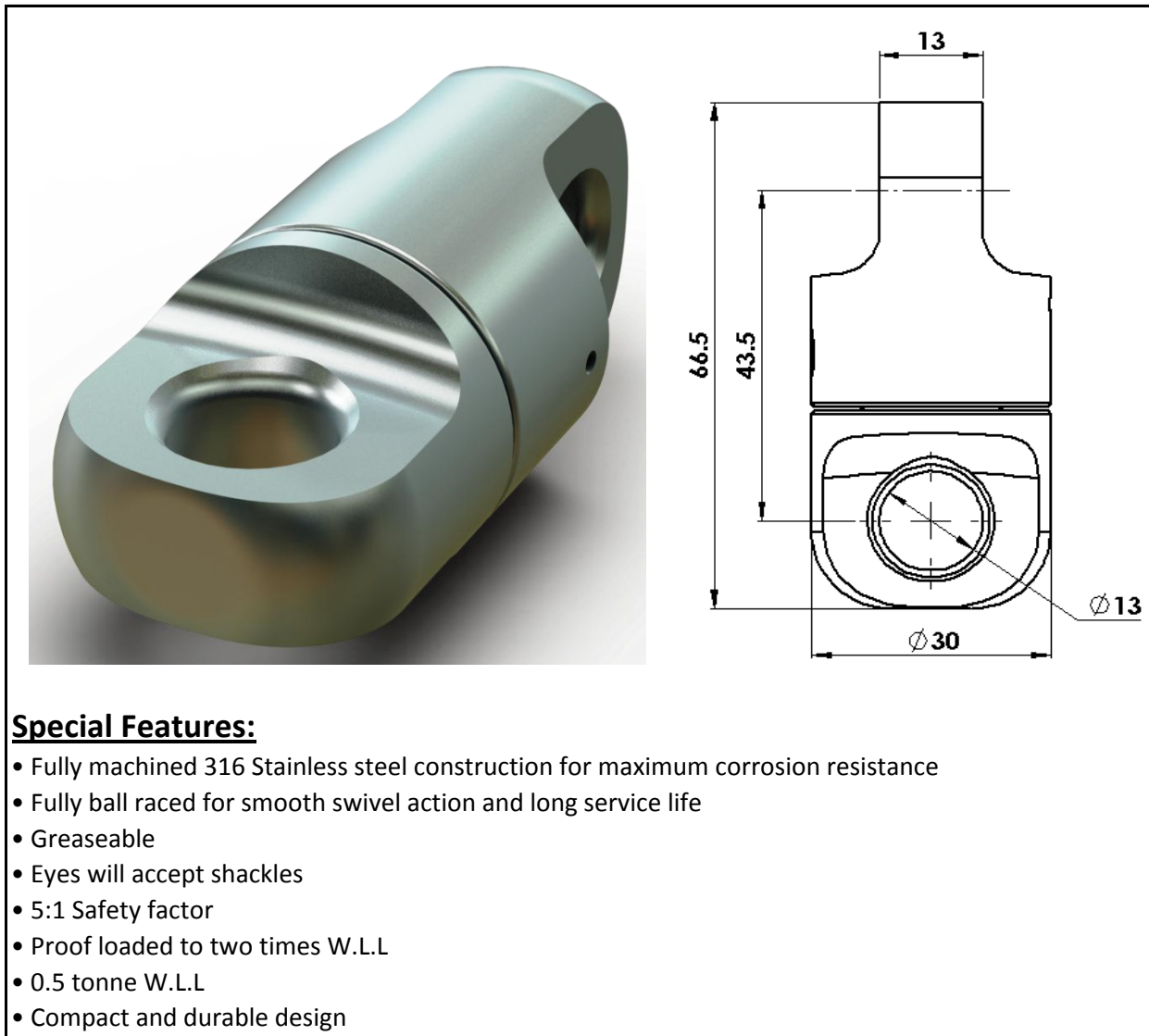
BLOCK SIZE	W.L.L FIXED tonne	W.L.L MOVING tonne	PROOF LOAD tonne	SHEAVE Ø mm	WIRE ROPE Ø mm	WEIGHT kg	PRODUCT CODE
300mm	10	20	40	300	28	65	7-155-300



Special Features:

- Compact and rugged design
- 5:1 Safety factor
- Fully serviceable
- Greaseable
- Fully sealed
- SKF thrust bearing
- Eyes will accept Shackles and Hammerlocks
- Proof loaded to two times W.L.L
- Zinc plated for corrosion resistance
- Also available in Clevis - Eye or Clevis - Clevis configurations (Eye - Eye shown)

SWIVEL W.L.L tonne	PROOF LOAD tonne	A mm	B mm	Ø C mm	D mm	Ø E mm	WEIGHT kg	PRODUCT CODE
1.5	3	123	82	16.5	16	40	0.5	7-265-015
3	6	167	137	28.5	20	64.5	2	7-265-030
6	12	243	169	34	30	85	5	7-265-060
10	20	303	213	40	38	106	11	7-265-100
15	30	303	213	40	38	106	16	7-265-150

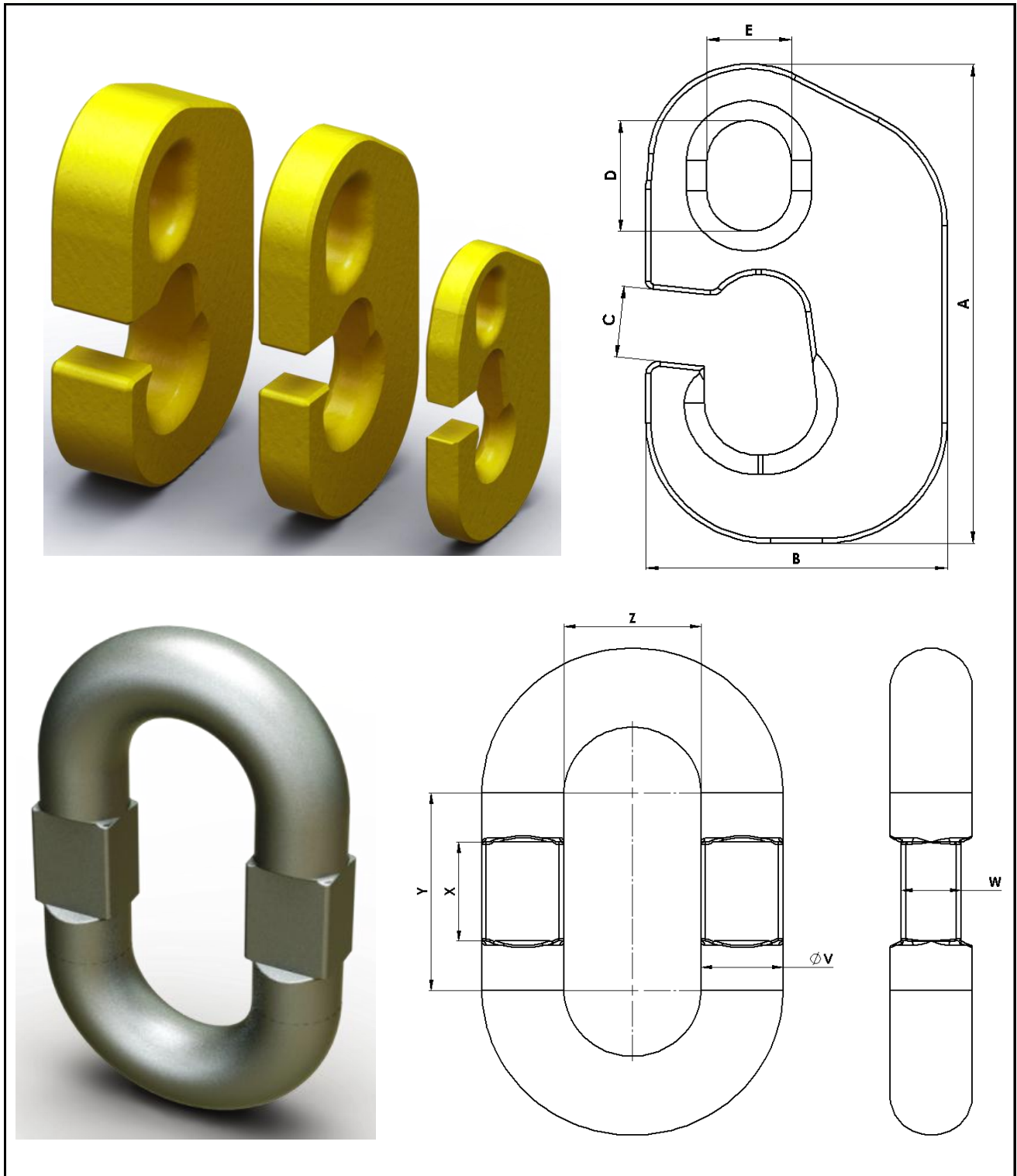


Special Features:

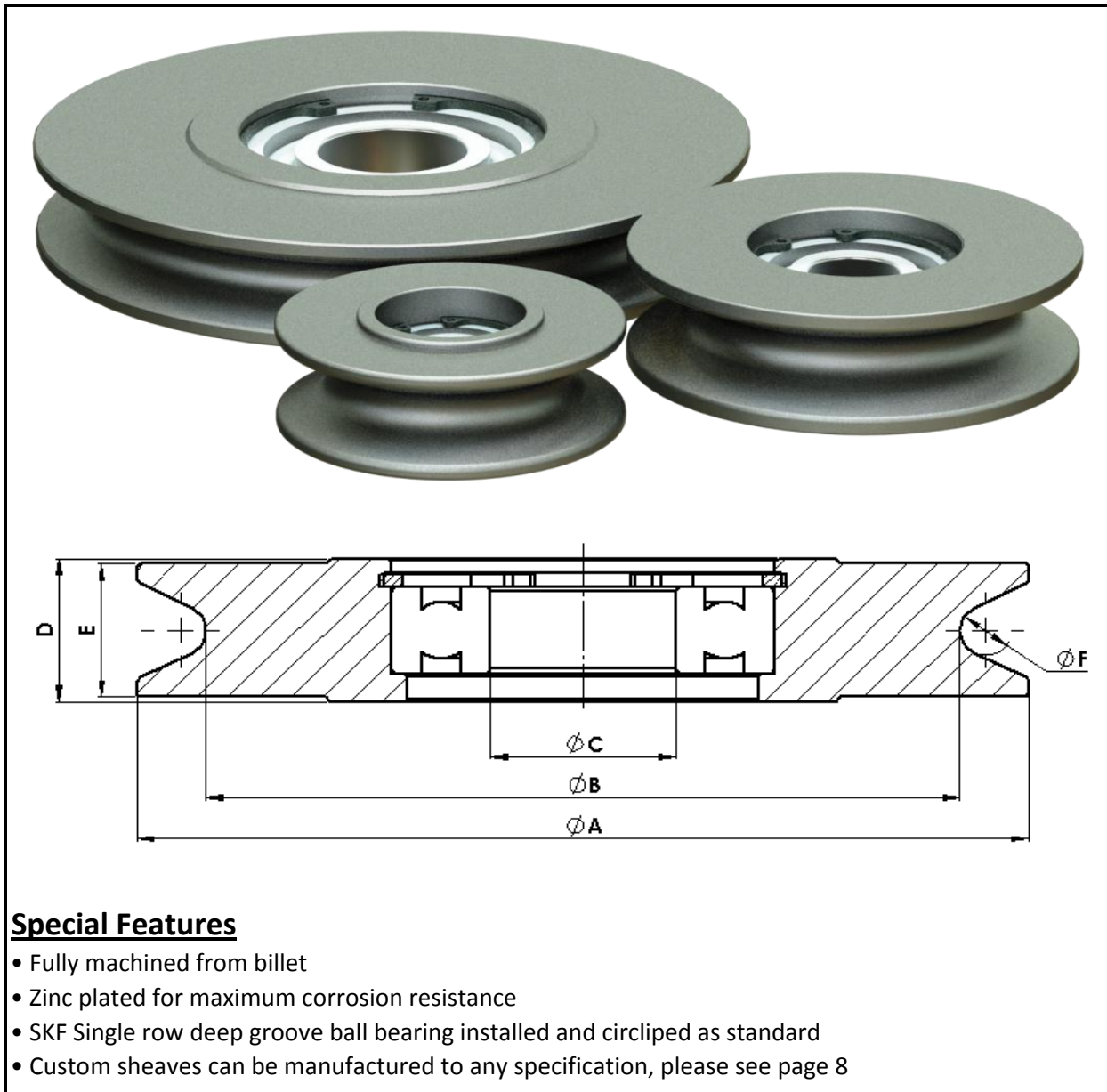
- Fully machined 316 Stainless steel construction for maximum corrosion resistance
- Fully ball raced for smooth swivel action and long service life
- Greaseable
- Eyes will accept shackles
- 5:1 Safety factor
- Proof loaded to two times W.L.L
- 0.5 tonne W.L.L
- Compact and durable design

PRODUCT CODE
7-250-010

G Hooks & Recessed Links



G' HOOK						← TO FIT →		RECESSED LINK					
PLATE mm	A mm	B mm	C mm	D mm	E mm	PRODUCT CODE	SIZE	Ø V mm	W mm	X mm	Y mm	Z mm	PRODUCT CODE
16mm	151	90	18	31	21	7-515-016	22mm	22	15	20	100	50	7-520-022
25mm	195	107	23	45	33	7-515-026	32mm	32	19	30	125	50	7-520-032
40mm	195	118	29	45	33	7-515-040	36mm	36	26	45	90	60	7-525-036
45mm	230	130	33	60	46	7-515-045	38mm	39	30	50	100	62	7-525-038



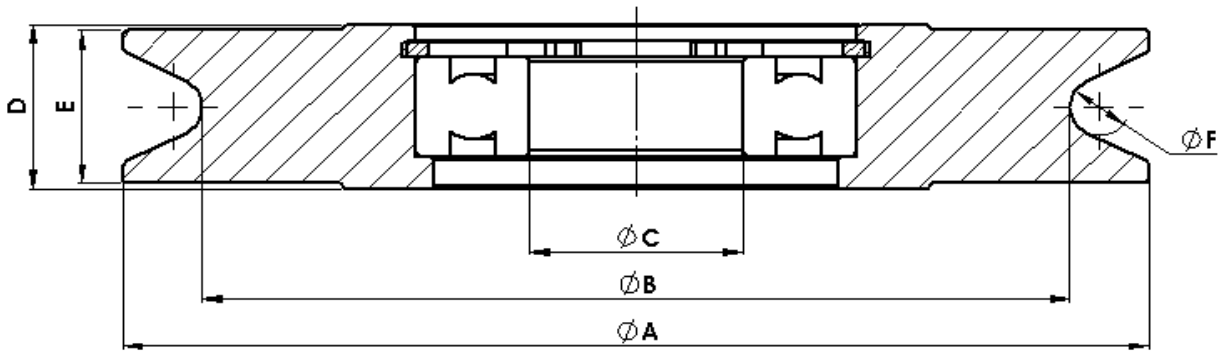
Special Features

- Fully machined from billet
- Zinc plated for maximum corrosion resistance
- SKF Single row deep groove ball bearing installed and circlipped as standard
- Custom sheaves can be manufactured to any specification, please see page 8

STOCK SIZE	OUTSIDE Ø A mm	B.O.G Ø B mm	SHAFT Ø C mm	HUB WIDTH D mm	RIM WIDTH E mm	ROPE Ø F mm	PRODUCT CODE
50	50	34	10	17	16	5	7-131-050
75	75	52	12	27	24	10	7-131-075
100	100	73	20	29.5	28	10	7-131-100
150	150	124	20	30.5	429	12	7-131-150
*168	168	142	35	28	26	9	7-131-168
355	355	310	60	60	56	19	7-131-355

* STOCK SIZE 168, Standard crane truck sheave.

** STOCK SIZE 200, Crane truck sheaves available on request.



	SPECIFY DIMENSION
OUTSIDE Ø A mm	
B.O.G Ø B mm	
SHAFT Ø C mm	
HUB WIDTH D mm	
RIM WIDTH E mm	
ROPE Ø mm	
BEARING TYPE	
FINISH	



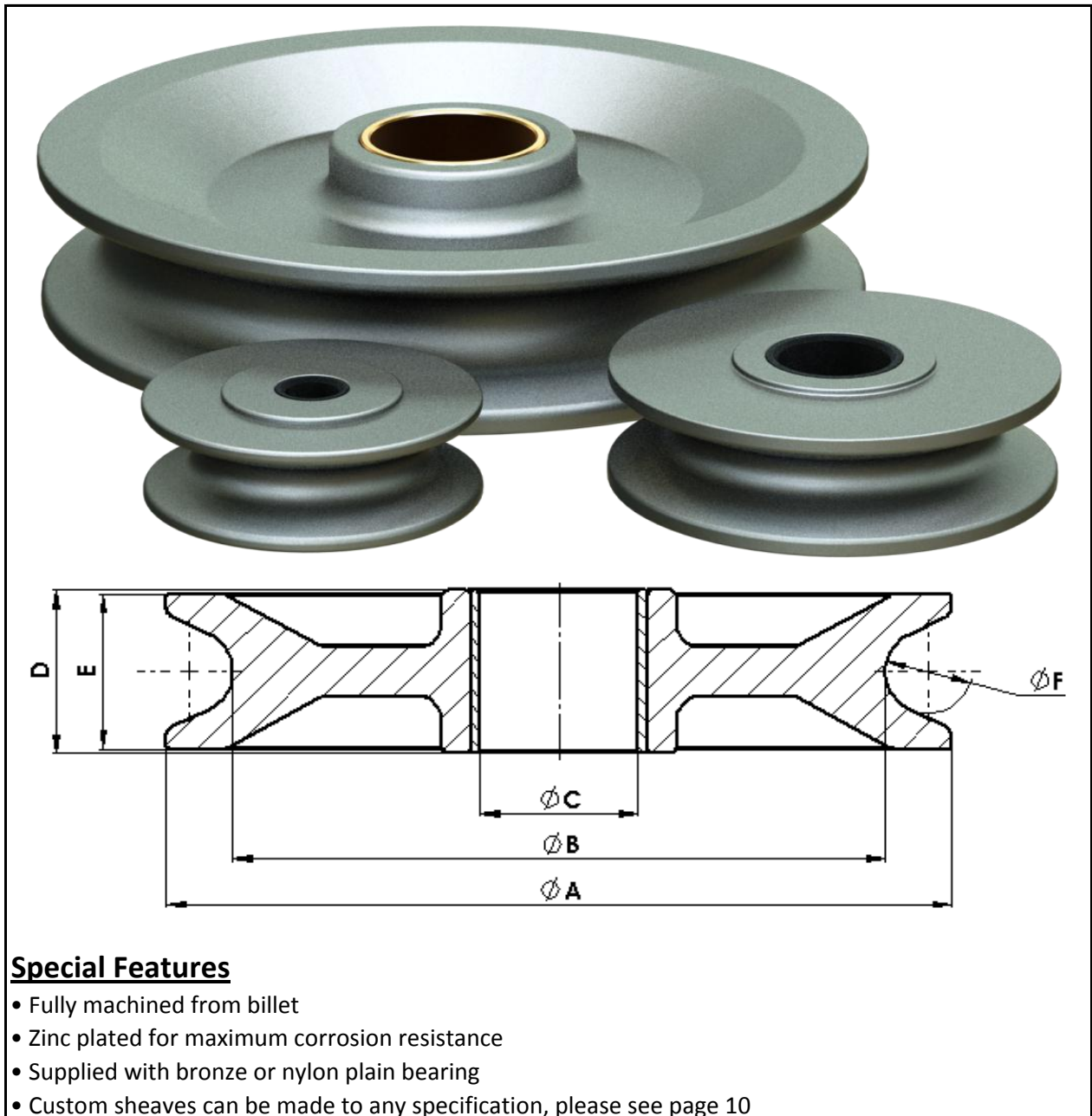
ROBERTS ENGINEERING LTD

Precision Engineers/CNC Machining

Unit 3D 200 Maces Road, PO Box 19966, Christchurch, New Zealand

T +64 3 384 4360 M +64 29 384 4360 F +64 3 384 4371

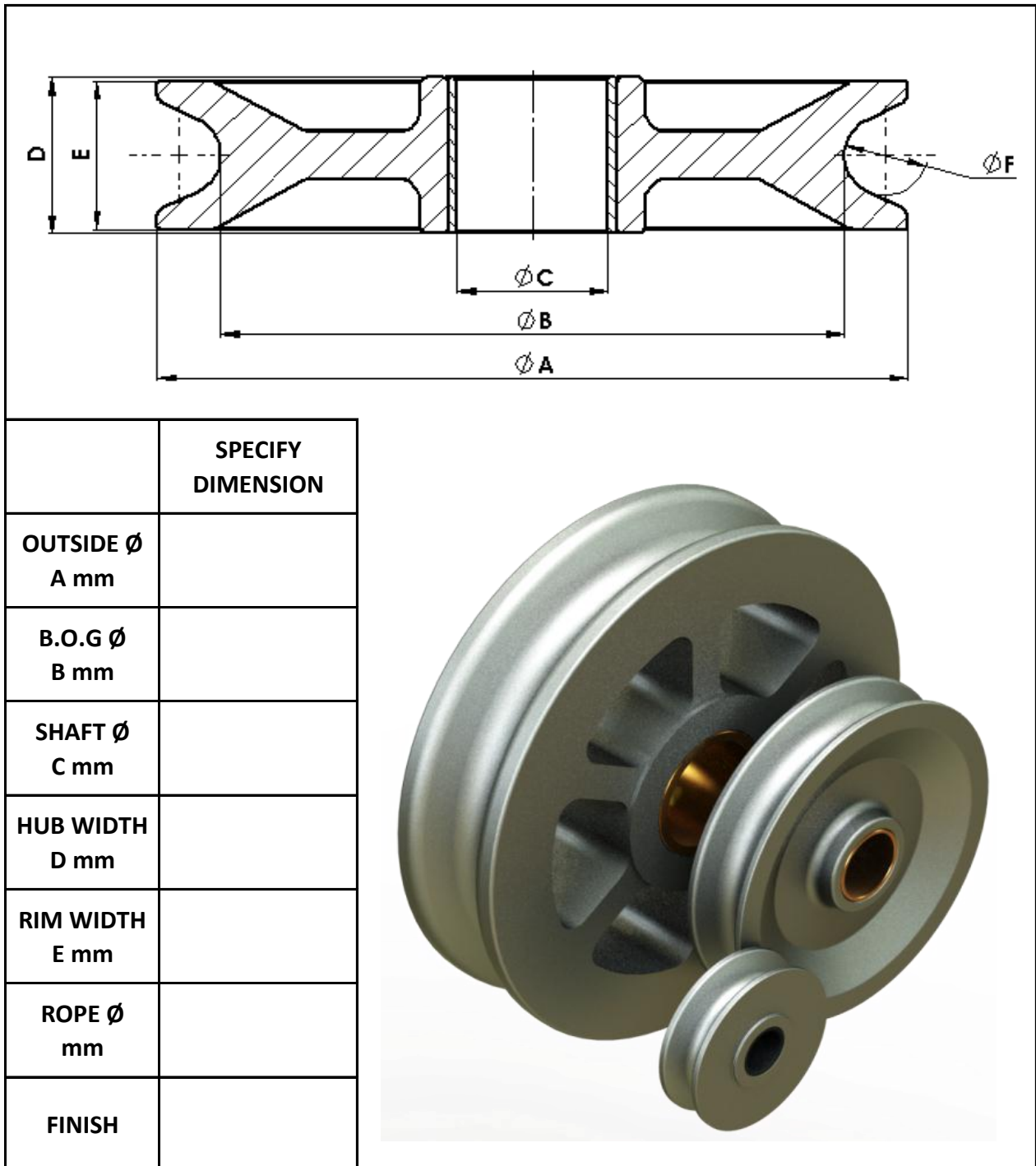
E sales@robertseng.co.nz W www.robertseng.co.nz



Special Features

- Fully machined from billet
- Zinc plated for maximum corrosion resistance
- Supplied with bronze or nylon plain bearing
- Custom sheaves can be made to any specification, please see page 10

STOCK SIZE	OUTSIDE Ø A mm	B.O.G Ø B mm	SHAFT Ø C mm	HUB WIDTH D mm	RIM WIDTH E mm	ROPE Ø F mm	PRODUCT CODE
75	75	52	12	27	24	10	7-130-075
100	100	73	20	31	28	10	7-130-100
150	150	124	35	31	29	12	7-130-150
200	200	166	35	43	41	19	7-130-200
250	250	210	45	59	57	20	7-130-250
300	310	260	63.5	80	74	28	7-130-300
355	355	310	60	60	56	19	7-131-355



ROBERTS ENGINEERING LTD

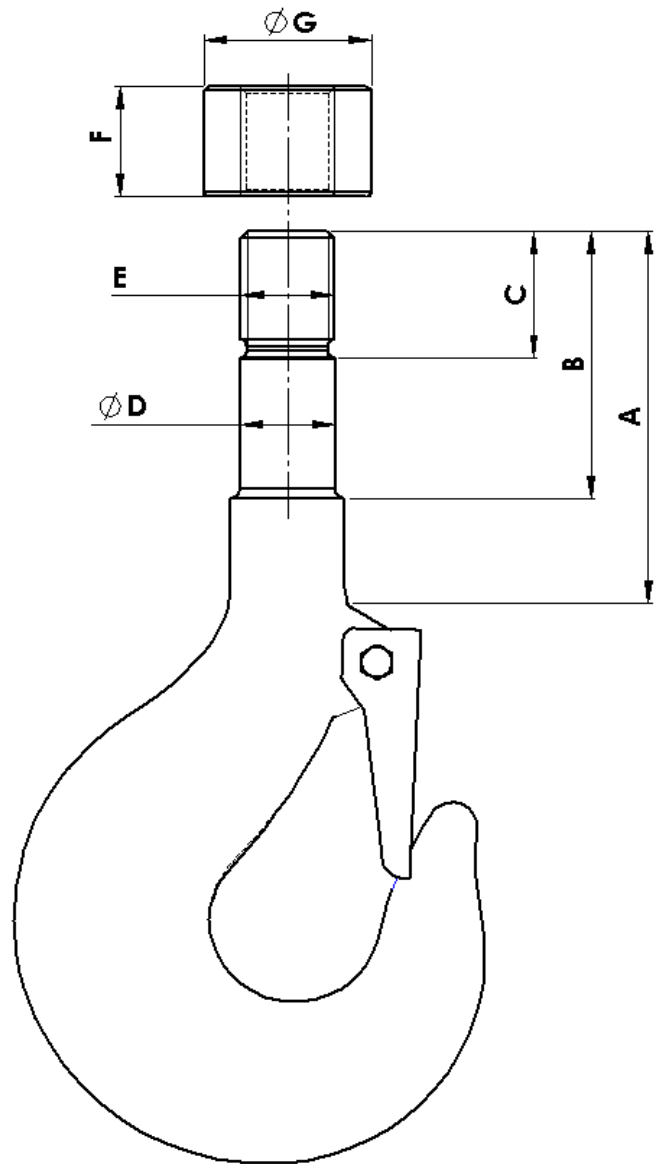
Precision Engineers/CNC Machining

Unit 3D 200 Maces Road, PO Box 19966, Christchurch, New Zealand

T +64 3 384 4360 M +64 29 384 4360 F +64 3 384 4371

E sales@robertseng.co.nz W www.robertseng.co.nz

Drop forged, single hooks to DIN 15401



DIMENSIONS								
A mm	B mm	C mm	SHANK Ø D mm	THREAD Ø E mm	THREAD PITCH	NUT LENGTH F mm	NUT Ø G mm	W.L.L tonne

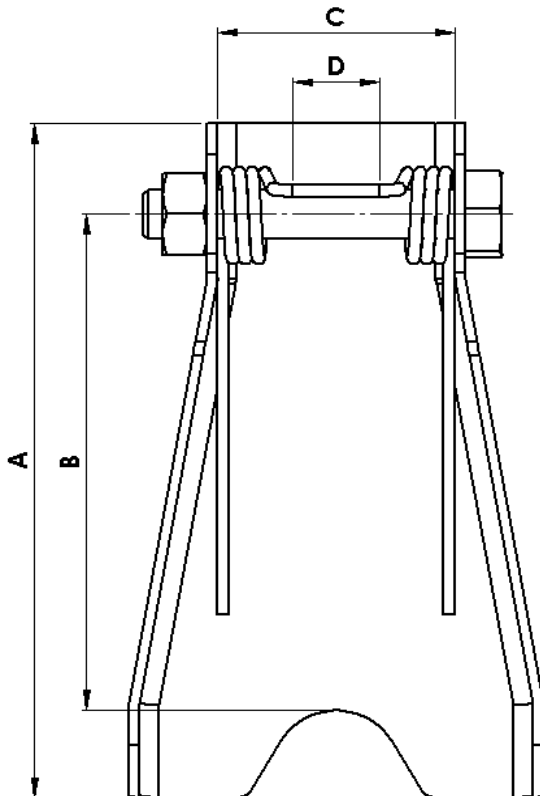
ROBERTS ENGINEERING LTD

Precision Engineers/CNC Machining

Unit 3D 200 Maces Road, PO Box 19966, Christchurch, New Zealand

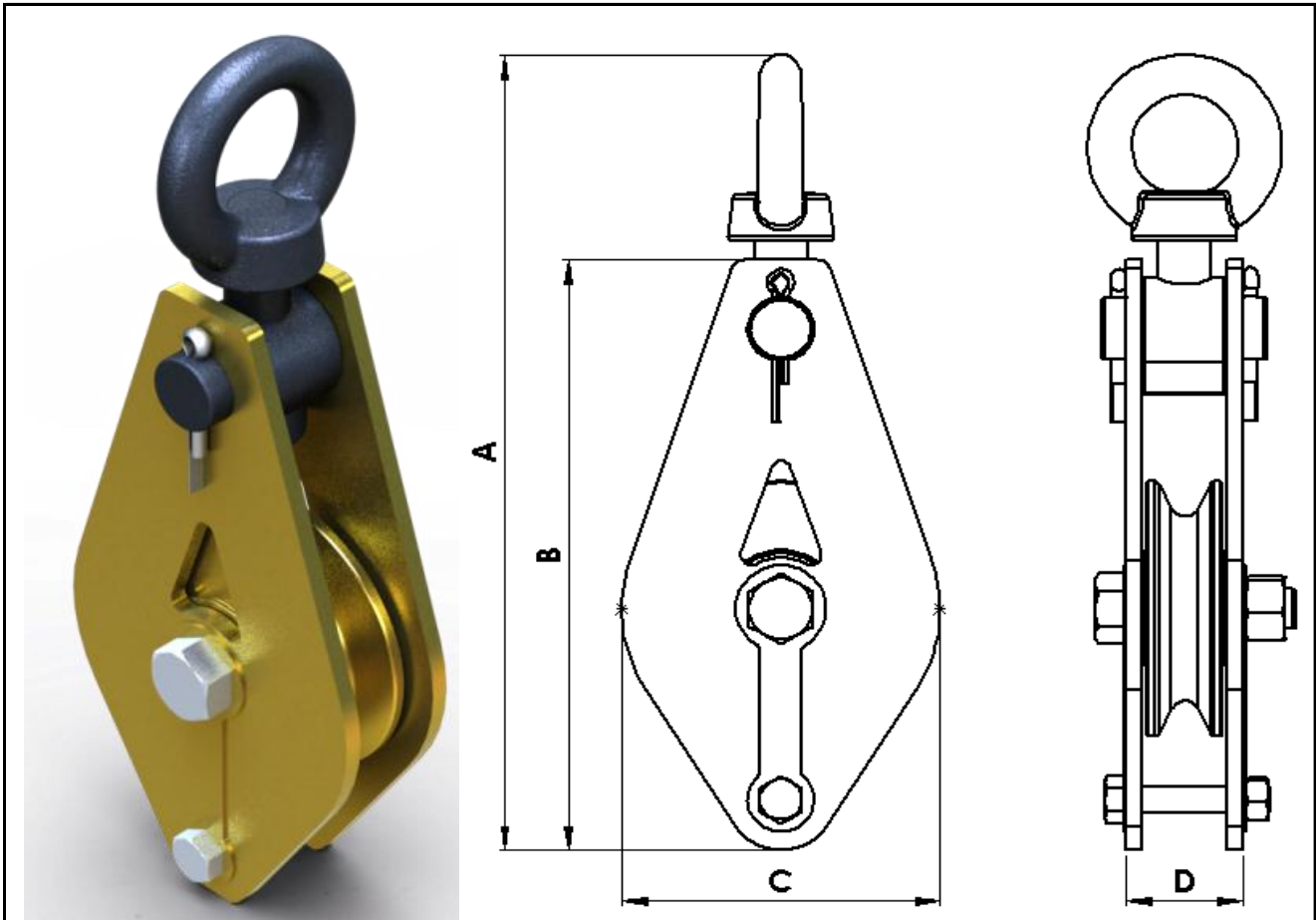
T +64 3 384 4360 M +64 29 384 4360 F +64 3 384 4371

E sales@robertseng.co.nz W www.robertseng.co.nz



HOOK W.L.L tonne	A mm	B mm	C mm	D mm
3	50	40	20	15
5	77	63	23	17
10	108	80	37	22
16	138	110	37	26

- Custom sizes can be made to order
- Zinc plated for corrosion resistance
- Supplied in kit form, with bolt & spring



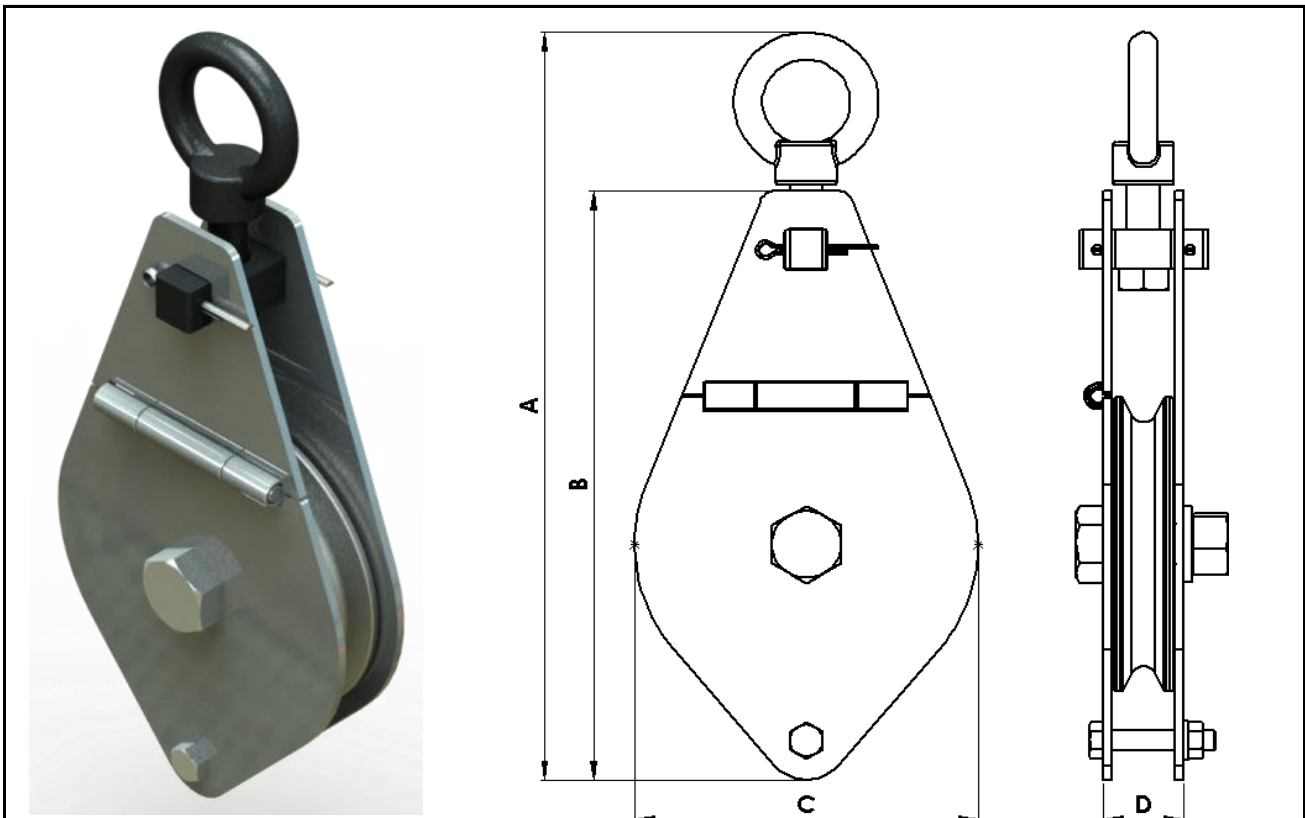
Special Features

- Light weight
- W.L.L - 2 tonnes
- 4:1 Safety Factor
- Swivelling eye & crosshead
- Eye fitted as standard, forged hook can be fitted on request
- Grooved for 10mm wire rope
- 100mm Sheave - Nylon bushed
- 150mm Sheave - Ball bearing
- Also available in 2 and 3 sheave configurations, non-snatch
- Zinc plated for corrosion resistance

SHEAVE Ø mm	A mm	B mm	C mm	D mm	WEIGHT kg
100	313	232	120	44	2.5
150	380	300	168	44	4.5

PRODUCT CODES - WITH EYE			
SHEAVE Ø	SINGLE	DOUBLE	TRIPPLE
100mm	7-101-1002T	7-120-1002T	7-125-1002T
150mm	7-101-1502T	7-123-1502T	7-125-1502T

PRODUCT CODES - WITH HOOK			
SHEAVE Ø	SINGLE	DOUBLE	TRIPPLE
100mm	7-102-1002T	7-121-1002T	7-123-1002T
150mm	7-102-1502T	7-124-1502T	7-126-1502T



Special Features

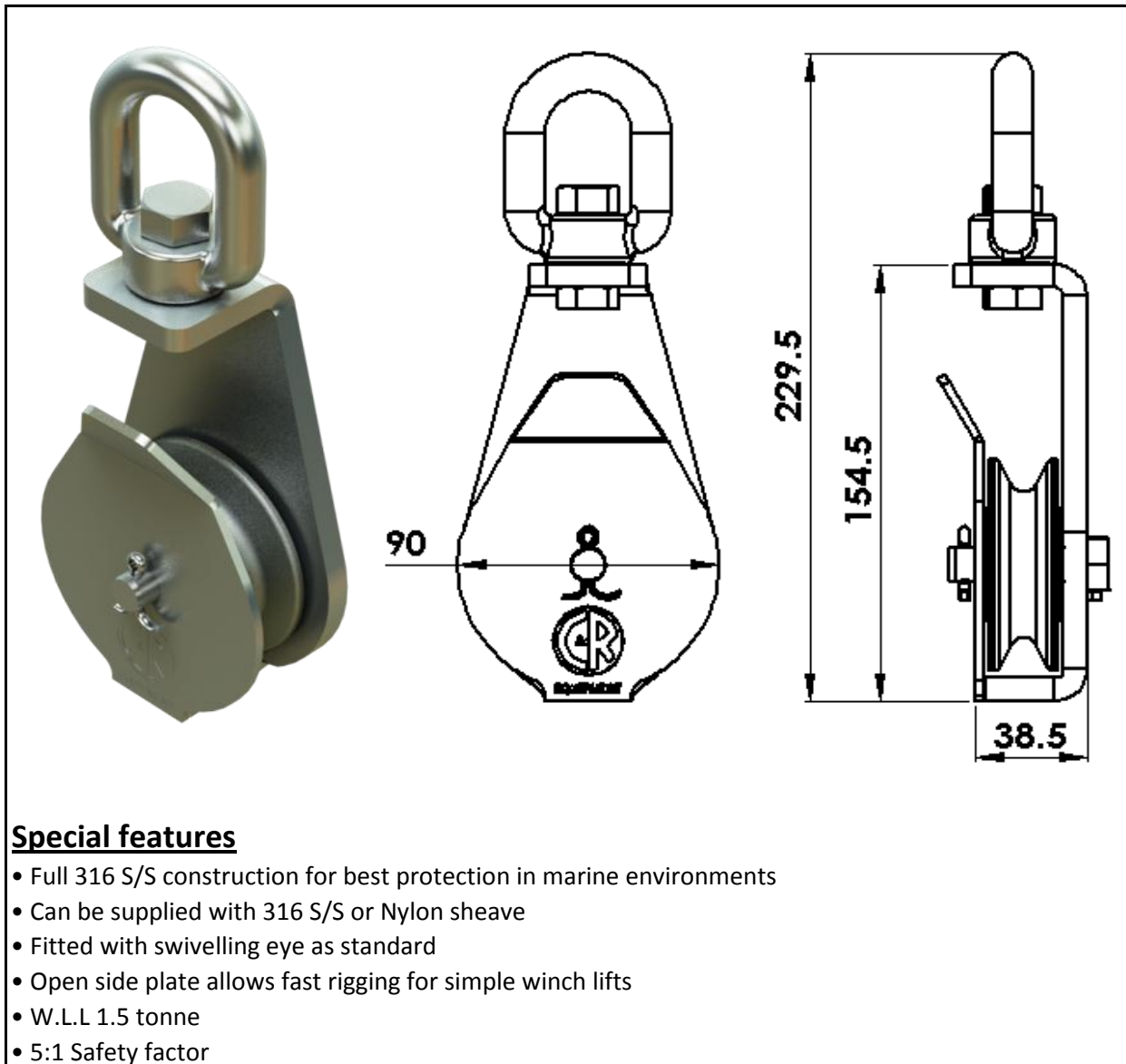
- Light weight
- W.L.L - 1 tonne
- 4:1 safety factor
- Swivelling eye
- Eye fitted as standard, forged hook can be fitted on request
- Single snatch and non-snatch versions available
- Quick action single snatch facilitates ease of rope reeving
- Grooved for 10mm wire rope
- 100mm Sheave - Nylon bushed
- 150mm Sheave - Ball bearing
- Zinc plated for corrosion resistance
- Available in 1, 2 and 3 sheave configurations *Note: 2 and 3 sheave blocks are Non-snatch

SHEAVE Ø mm	A mm	B mm	C mm	D mm	WEIGHT kg
100	313	232	120	39	1.75
150	380	300	168	39	2.75

PRODUCT CODES - DOUBLE, NON-SNATCH		
SHEAVE Ø	WITH EYE	WITH HOOK
100mm	7-120-100	7-121-100
150mm	7-123-150	7-124-150

PRODUCT CODES - SINGLE				
SHEAVE Ø	NON-SNATCH WITH EYE	SNATCH WITH EYE	NON-SNATCH WITH HOOK	SNATCH WITH HOOK
100mm	7-101-100	7-105-100	7-102-100	7-106-100
150mm	7-101-150	7-105-150	7-102-150	7-106-150

PRODUCT CODES - TRIPPLE, NON-SNATCH		
SHEAVE Ø	WITH EYE	WITH HOOK
100mm	7-125-100	7-126-100
150mm	7-125-150	7-126-150





Special features

- Manufactured in New Zealand from 4140 High Tensile round bar
- Range of sizes available to meet individual requirements for wire rope splicing
- Available lengths, 200mm, 300mm, 450mm, 600mm & 800mm
- Fully machined with heat treated and ground tip

NOMINAL LENGTH mm	PRODUCT CODE
200	7-205-200
300	7-205-300
450	7-205-450
600	7-205-600
800	7-205-800